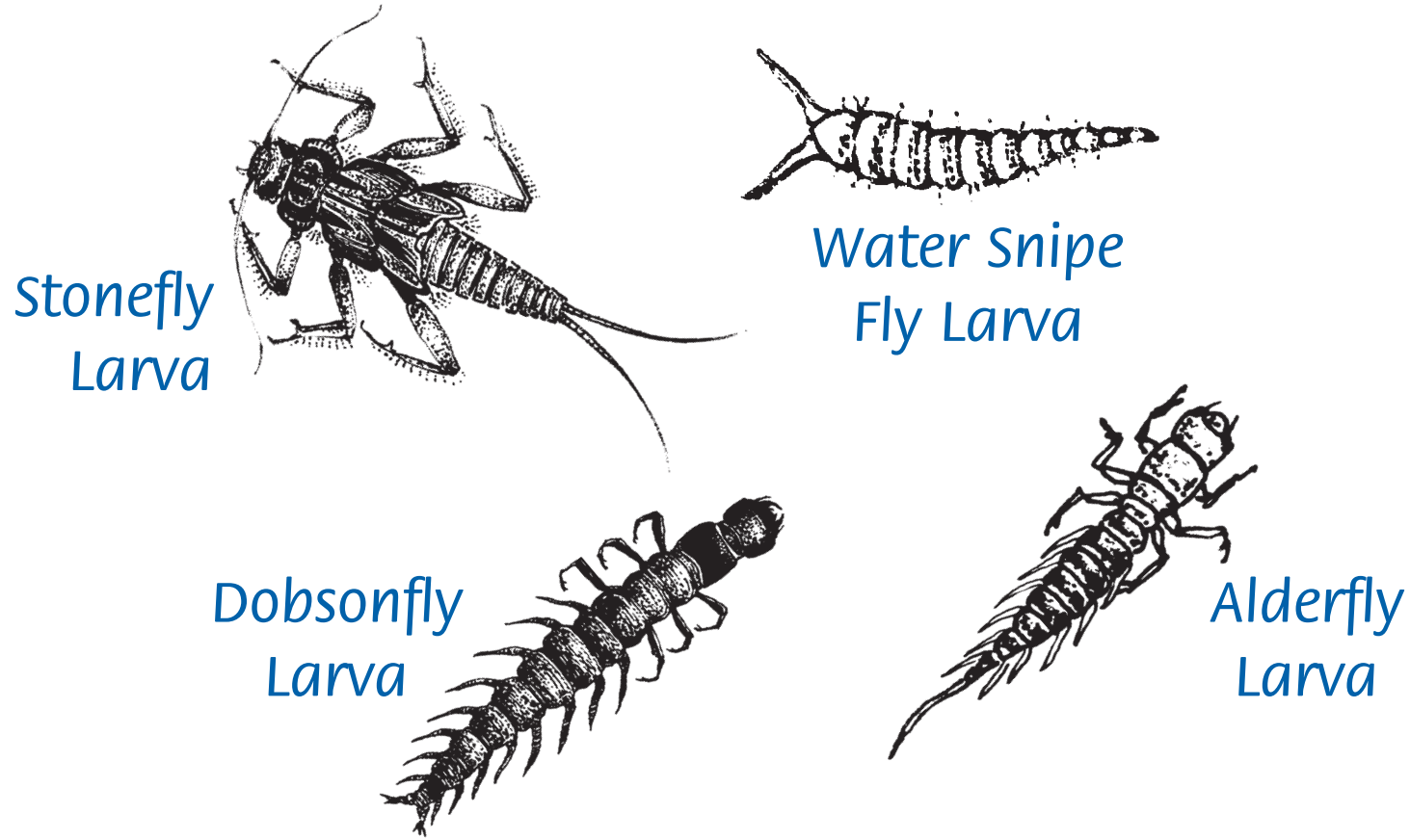


Citizen Monitoring

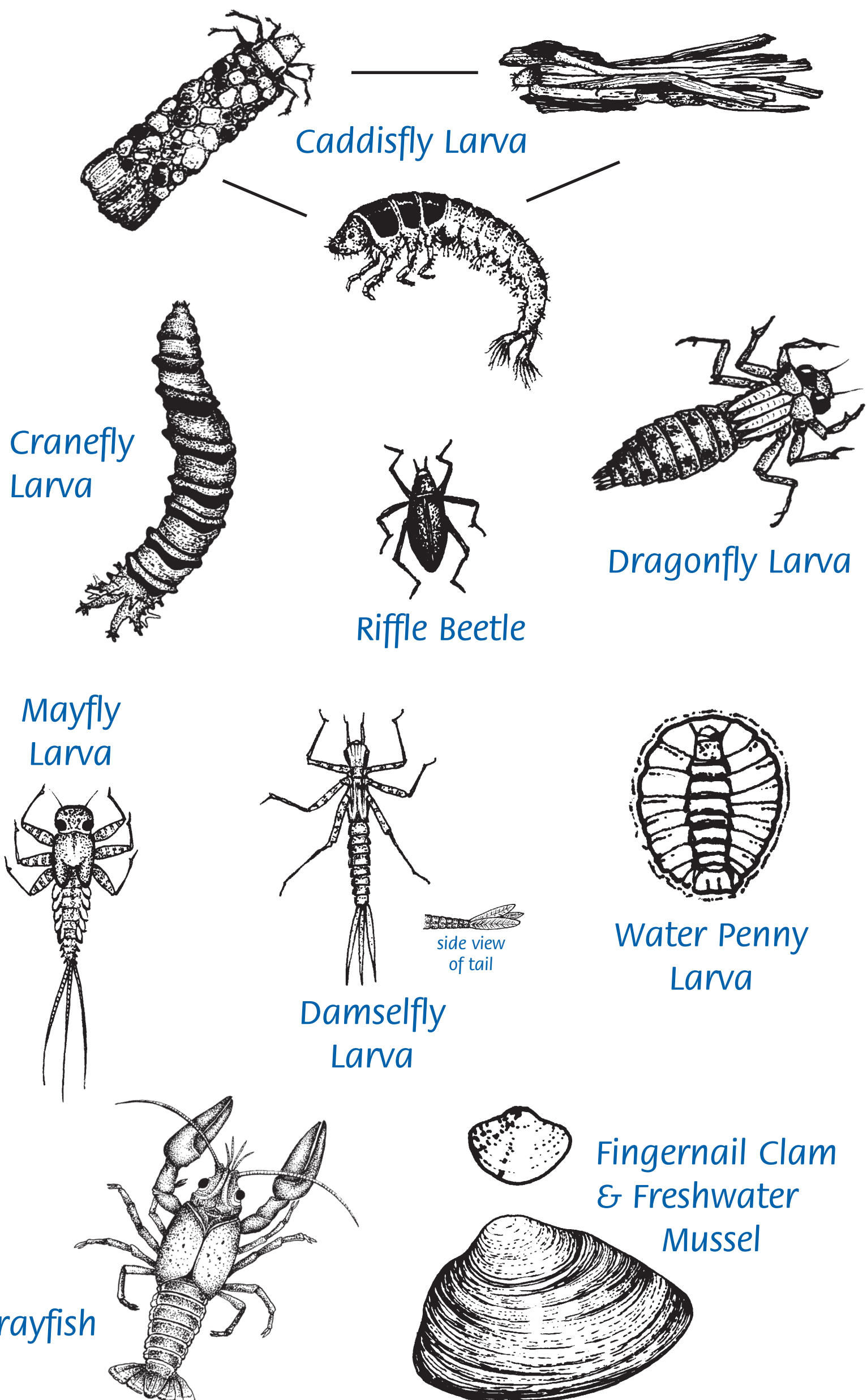
Biotic Index for Streams and Rivers

1 Circle the animals found in each category

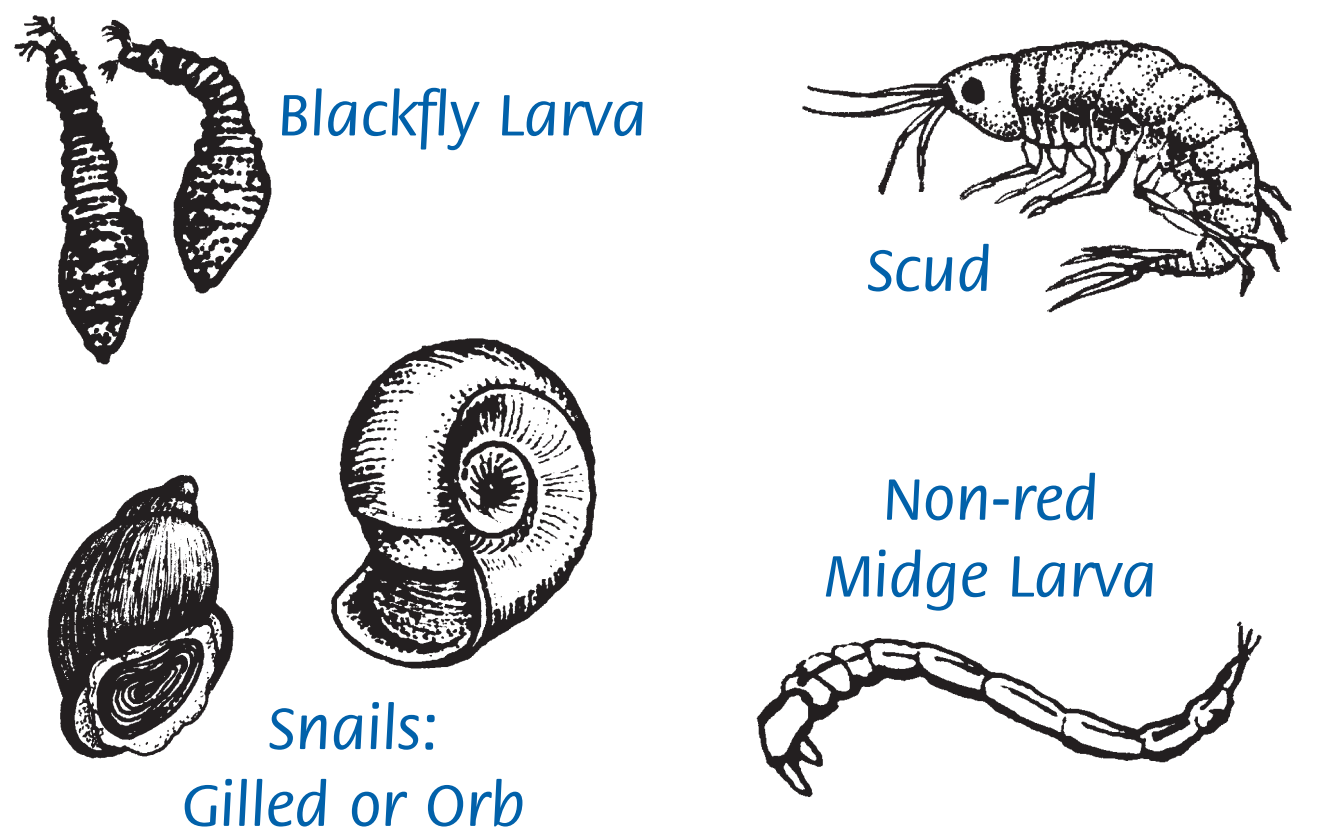
GROUP 1: Sensitive to pollutants



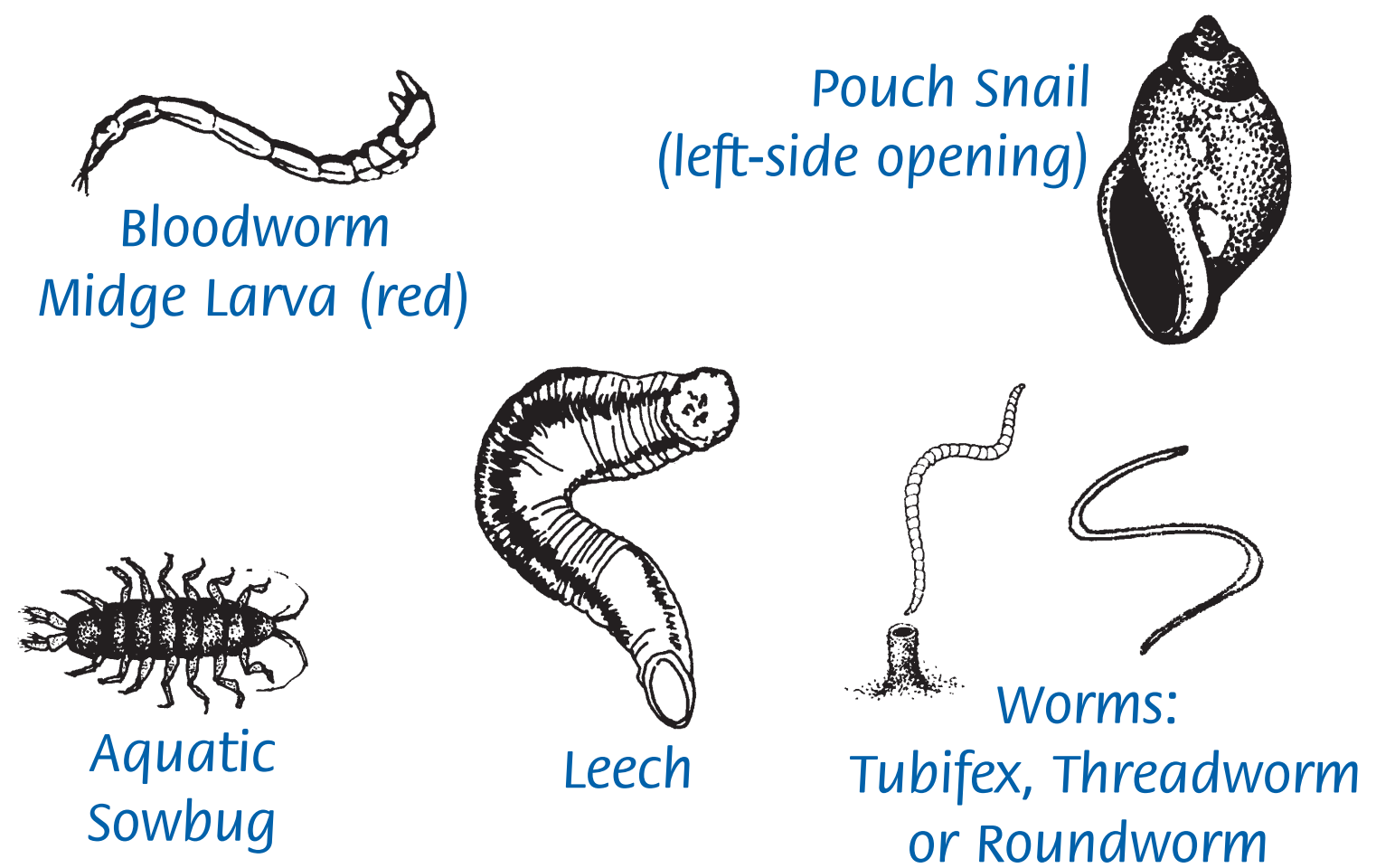
GROUP 2: Semi-Sensitive to pollutants



GROUP 3: Semi-Tolerant of pollutants



GROUP 4: Tolerant of pollutants



2 Tally animals circled in each category. Then multiply by number given.

Group 1:	Sensitive	<input type="text"/>	X 4 =	<input type="text"/>
Group 2:	Semi-Sensitive	<input type="text"/>	X 3 =	<input type="text"/>
Group 3:	Semi-Tolerant	<input type="text"/>	X 2 =	<input type="text"/>
Group 4:	Tolerant	<input type="text"/>	X 1 =	<input type="text"/>
Total		<input type="text"/>	(E)	<input type="text"/>

3 Divide (F) by (E): ÷

4 Index Score (F ÷ E)

5 How Healthy is the stream?

3.6 and up	Excellent
2.6-3.5	Good
2.1-2.5	Fair
1.0-2.0	Poor